



DYNAMIX VC-M/VC-S

VDSL CO Converter



SPEED CHANGE QUICK GUIDE

I. Please follow the procedures below step by step to change the speed settings of Dynamix VC-S/VC-M

II. VDSL CO & VDSL CPE:

1. Power on both VDSL CO & VDSL CPE
2. Connect each others over phone wire (PLEASE USE ENCLOSED PHONE WIRE)

Note : Please remove PBX(voice)signal when running speed change function.

3. Wait for a while and check if both link LEDs are on.(Default on 10M mode)
4. Plug in one end of the console cable(RJ-45) to VDSL CO then connect the other end(RS-232) to PC/Laptop's RS-232 COM port
5. Insert the diskette and select the VDSL Configuration Software
6. Run speed change utility program with Microsoft Win95/98/2000/NT/XP OS
7. Double click on the VDSL Configuration Software Icon, you will see

Figure 1.1, please select which COM port you have connected & click OK

8. You will now see *Figure 1.2*

9. Click Link Configuration to enter *Figure 1.3*

10. Select speed mode according to your requirement

※Speed mode=Line Rate

11. Check phone wire length limitation:

5 M → 1500 meters = 4950 feet

10 M → 1200 meters = 3960 feet(Default)

15 M → 1000 meters = 3300 feet

12. Click “Apply” to confirm settings

13. VDSL CO & CPE's LEDs will be off

14. Wait for around 1 minute

15. Check if the LEDs of both VDSL CO & VDSL CPE are on

16. If yes, the speed change is done successfully

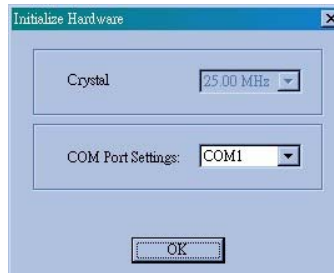


Figure 1.1

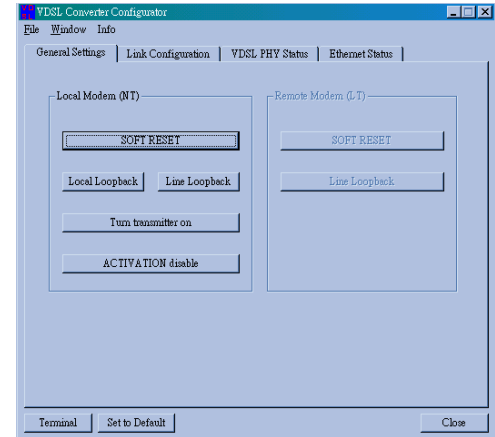
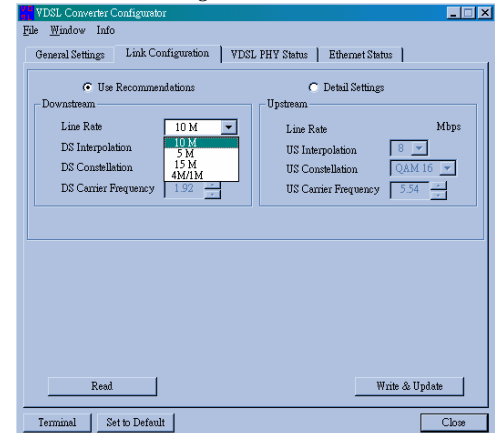


Figure 1.2



II. Trouble shooting :

✂How to fix if VDSL CO & VDSL CPE cannot link, which caused by speed change failure?

1. Re-connect both VDSL CO & VDSL CPE by short length phone wire & without PBX(voice) signal
2. Re-power on VDSL CPE once
3. Change VDSL CO to its last speed mode
4. Wait for about 1 minute
5. Check if both LEDs of VDSL CO & VDSL CPE are ON
6. Done

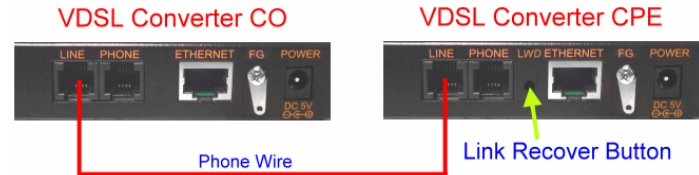
✂If you forget the last speed mode of VDSL CO

Please try to change from 4/1M to 15M until both Link LEDs are ON
(there are 4 modes – 4/1, 5, 10, 15Mbps)

Note : Please wait for 1 minute after running the speed change program to re-establish link.

If you still have any queries, please refer to the **user's manual** for more details.

III. Link Recover Procedures:



Operating Procedures:

1. Power on VDSL CO, start the speed change program, change speed mode to 4/1Mbps
2. Connect phone line between VDSL CO & VDSL CPE
3. Push still Link Recover Button of VDSL CPE and power on VDSL CPE
4. Wait for 5 seconds, then release Link Recover Button
5. Now, VDSL CPE speed mode has changed to 4/1Mbps mode, wait until VDSL CO & VDSL CPE establish link { **You can see that both VDSL LEDs(CO & CPE) are steadily on** }
6. Run speed change program, you can set your desired speed mode

Remark: LWD represents 4/1Mbps

Do not install plastic feet at the bottom of the converter when using brackets.