

LAN Interface

- 4-ports switching hub (4-port router)
- 10/100 Base-T auto-sensing and auto-negotiation
- Auto-MDIX (4-port router)

Hardware Interface

- WAN: RJ-11
- LAN: RJ-45 x 4 (4-port router)
- LAN: RJ-45 x 1 (1-port router)
- Console: RS232 female
- RST: Reset button for factory default

Indicators

- General: PWR
- WAN: LNK, ACT
- LAN: 10M/ACT, 100M/ACT (1-port router)
- LAN: 1, 2, 3, 4 (4-port router)
- SHDSL: ALM

Physical / Electrical

- Dimensions: 18.7 x 3.3 x 14.5cm (WxHxD)
- Power: 100~240VAC (via power adapter)
- Power consumption: 9 watts max
- Temperature: 0~45°C
- Humidity: 0%~95%RH (non-condensing)

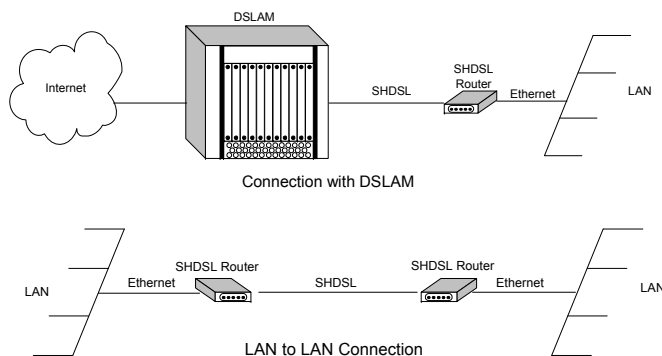
Routing

- Support IP/TCP/UDP/ARP/ICMP/IGMP protocols
- IP routing with static routing and RIPv1/RIPv2 (RFC1058/2453)
- IP multicast and IGMP proxy (RFC1112/2236)
- Network address translation (NAT/PAT) (RFC1631)
- NAT ALGs for ICQ/Netmeeting/MSN/ Yahoo Messenger
- DNS relay and caching (RFC1034/1035)
- DHCP server, client and relay (RFC2131/2132)

Bridging

- IEEE 802.1D transparent learning bridge
- IEEE 802.1q VLAN
- Port-based VLAN (4-port router)
- Spanning tree protocol

Applications



Dynamix®
www.godynamix.com

**G.shdsl
Modems/Routers
Dynamix UM-S Series**



Quick Start Guide

Packing List

The contents:

- ◆ One Main Unit
- ◆ One DC Power Adapter
- ◆ One LINE Cable
- ◆ One Console Cable (DB9)
- ◆ One CD with User Manual.

Front Panel

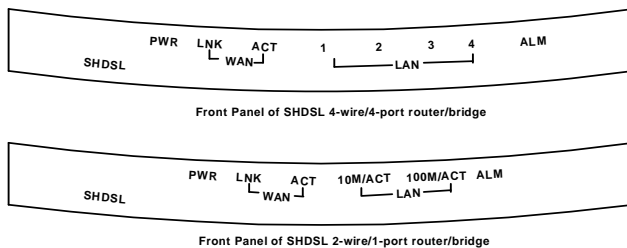


Figure 1: Front Panel

Rear Panel

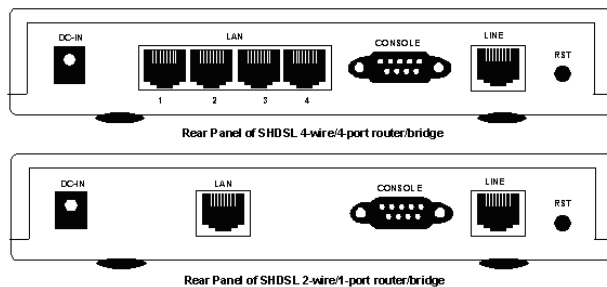


Figure 2: Rear Panel

Install the SHDSL Router

To avoid possible damage to this Router, do not turn on the router before Hardware Installation.

- ✓ Connect the power adapter to the port labeled DC-IN on the rear panel of the product.
- ✓ Connect the Ethernet cable.

Note: If the 1-port router is directly connected to PC or NB, the Ethernet cable has to be used cross over one. If the 1-port router is connected to hub or switch, be sure that the hub or switch supporting auto-sensing. If yes, both cross over and none cross over Ethernet cable are suitable. If not, only pass through Ethernet cable could be used. The 4-port router supports auto-MDIX switching hub so both through and cross-over Ethernet cable can be used.

- ✓ Connect the phone cable to the product and the other side of phone cable to wall jack.
- ✓ Connect the power adapter to power source.
- ✓ Turn on the PC or NB which is used for configuration the Router.

Connections :

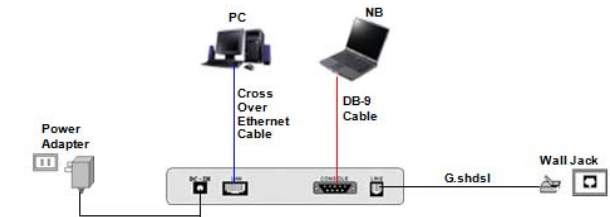


Figure 3: Direct Connection with PC or NB for 1-port router

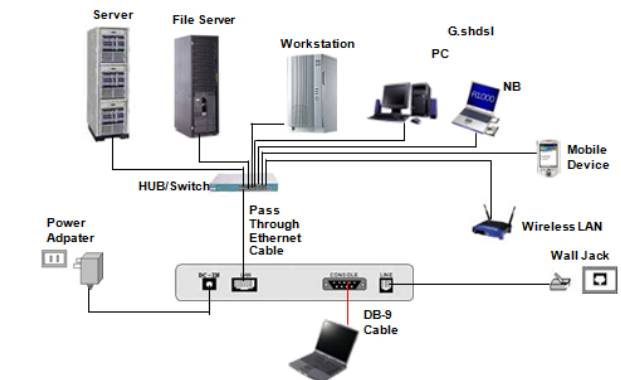


Figure 4: Connection with Hub/Switch for 1-port router

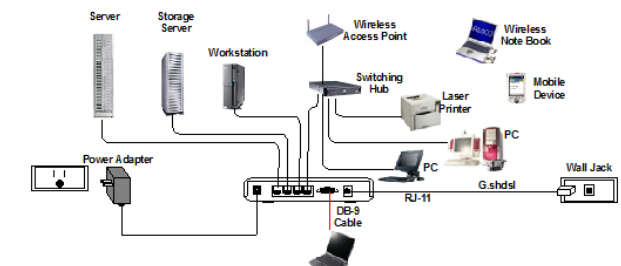


Figure 5: 4-port router with complex network topology