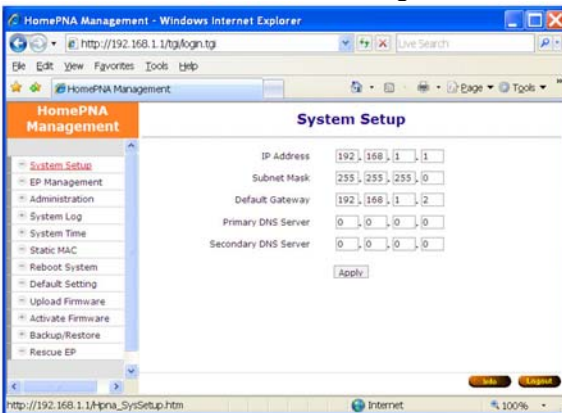


The bridge will prompt you a window for authorization. The factory default **Username** is “**admin**”, also **Password** is “**admin**”. Please change it to a more secured password after you login successfully. Here shows the main menus after logon:



The main window contains the left sub-window for the items to be configured, and the right sub-window displays the contents for the selected item. Click your mouse on the item in the left window will pop out the corresponding item-window in the right side. Click on the “**Apply**” button (or “**OK**” button) will submit your new settings into the DYNAMIX HP-51/M bridge and will take effect immediately.

## Troubleshooting

Please check this simple troubleshooting before contacting with your service provider.

### **The Power LED is off.**

- Make sure the power adapter is properly plugged into a live electrical outlet.

### **The LAN or Link/Act(HCNA) LED is off.**

- Make sure the connection of such ports is secure.
- The Ethernet device or EP device to which you are connected should be powered on and properly configured.

### **The HCNA SyncMode LED is off.**

- The bridge always runs in “Synchronous MAC Mode” and SyncMode LED should be always on after power on. If it is off, please contact with your provider for failed Hardware or Firmware.

### **Can not transmit/receive data between the bridge and EPs**

- Make sure they are properly powered and all the cables are connected properly.
- Check the configuration settings in the bridge,
  - Bridge and EP have the same “Privacy Key”
  - The “Host Limit” for each EP is not zero

For unmatched “Privacy Key”, it is not possible to send/receive data between the bridge and each EP. (Web browser shows red background for unmatched EP row in “EP Management” configuration window).

If “Host Limit” of EP is 0 (zero), the EP is not allowed to send/receive data.

- Check the physical connection quality between the bridge and each EP by diagnosis tools embedded in the bridge (click “**Test**” button).
- If the connection quality is not good enough, please review the whole coax segment,
  - Wiring topology: not across amplifier
  - Total path attenuation: including mixer, combiner, splitter and tap
  - Noise sources: as cannot co-exist with DOCSIS signal
- Check the Firmware version of the bridge and EPs.

### **Can not transmit/receive data between the EPs**

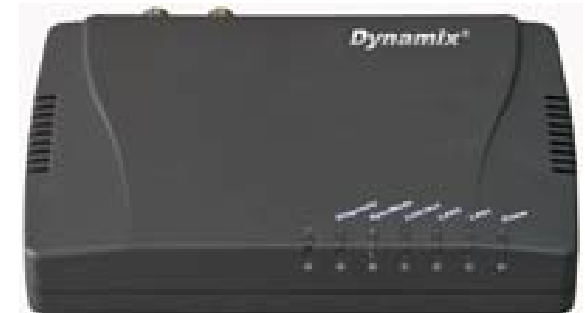
- For security, it is intentionally designed to block the communication between EPs.

### **Can not reach high speed communication**

- Please check the settings of bandwidth control, or the maximal throughput of your WAN service.
- Please check your physical connection quality.
- Consult with your service provider for potential specific-application-optimized Firmware.

**Dynamix**<sup>®</sup>  
www.godynamix.com

Coax MDU  
Master Bridge  
DYNAMIX HP-51/M



Quick Start Guide

Version 1.0

## Packing List

The contents:

- ◆ One Main Unit (DYNAMIX HP-51/M)
- ◆ One DC 5 V Power Adapter
- ◆ One F-Type Male-to-Male Coaxial Cable
- ◆ One RJ-45 Ethernet Cable.

## Rear Panel



Figure 1: Rear Panel DYNAMIX HP-51/M

## Connectors

1. **DC5V:** Connect to the power adapter plug.
2. **LAN1/LAN2:** Two fast Ethernet ports to connect Switch / FTTx / xDSL Modem for Internet access.
3. **Reset:** While the bridge is turned on, press and release this button will reboot the bridge. Press it for lasting 5 seconds will restore all settings to factory default. For example, the IP address will restore to default "**192.168.1.1**".
4. **HCNA:** Attach to existing coaxial cable and use the cable as networking backbone in one or more MDUs DYNAMIX HP-51/M. The **DYNAMIX HP-51/M** is the HCNA master device and controls the other HCNA endpoint devices (refer to **EP**, as **DYNAMIX HP-51/S**) on the same coax network.
5. **TV/Antenna:** Connect to TV set. Or connect to VHF/UHF antenna or CATV to bypass TV signal to HCNA port.

## LED Indicators

LED	Status		
	Glowing	Dimming	Flashing
<b>Power</b>	Powered by DC5V	Not powered	N/A
<b>LAN1</b>	LAN1 Link up	Disconnect or Link fail	Receive or Transmit
<b>LAN2</b>	LAN 2 Link up	Disconnect or Link fail	Receive or Transmit
<b>Link/Act</b>	HCNA Link up	Disconnect or Link fail	Receive or Transmit
<b>SynMode</b>	Synchronous Mode	Bridge failed	N/A
<b>Diagnosis</b>	Diagnosing EPs	Not running Diagnosis	N/A

**NOTE:** HCNA always adopt the **Synchronous MAC** protocol layer in coax network in order to coordinate all the transmissions and eliminate any collisions. It works as head-end device in one coax MDU network.

## Connecting the Cables

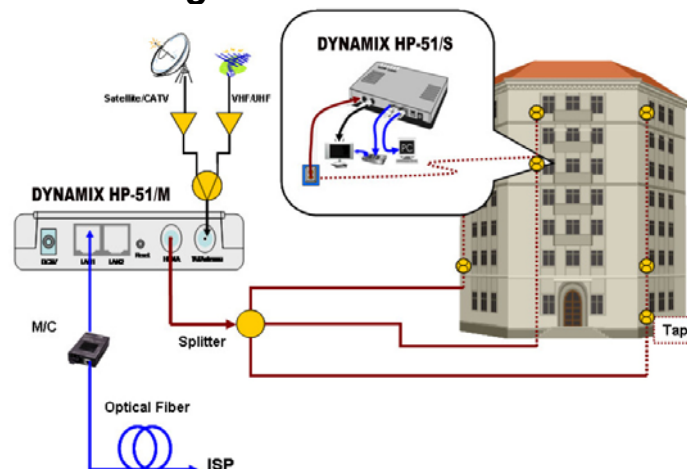


Figure 2: Cabling example 1 of the Bridge

Figure 3 shows the connection by other Combiner or Mixer-Splitter with the bridge.

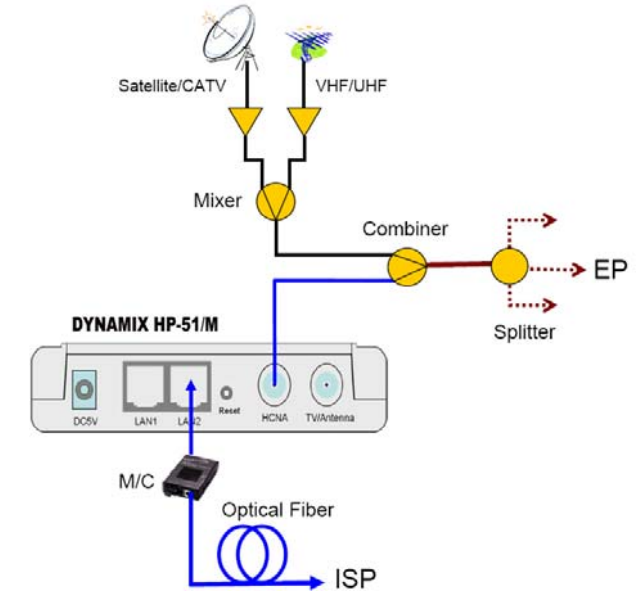


Figure 3: Cabling example 2 of the Bridge

## Configure by Web Browser

The factory default IP address of the DYNAMIX HP-51/M bridge is "**192.168.1.1**" and the default subnet mask is "**255.255.255.0**". To access the bridge with default IP, your PC's IP address should be as "**192.168.1.xxx**". For instance, you may connect one PC with the bridge directly by one Ethernet cable between your PC's Ethernet adapter and the bridge's port LAN1. Also configures your PC's TCP/IP setting to fixed IP as "**192.168.1.xxx**", subnet mask as "**255.255.255.0**", disable DHCP option. Make your PC and the bridge within the same "**192.168.1.1**" network. Type in **192.168.1.1** in your browser's website navigating field, as the following: