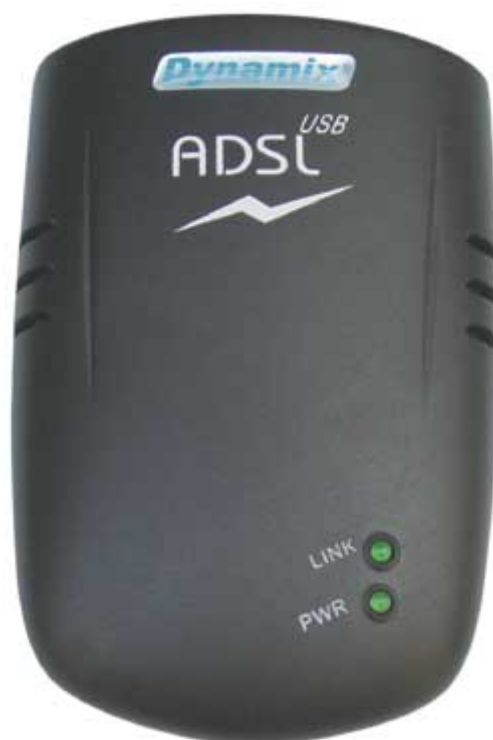




# DYNAMIX UM-AU

ADSL USB MODEM



**Quick Start Guide**

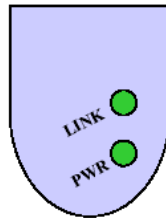
# Contents

---

I. Panel Description.....	P2
II. Hardware Installation.....	P3
III. Driver Installation.....	P4
IV. Driver Utility.....	P13

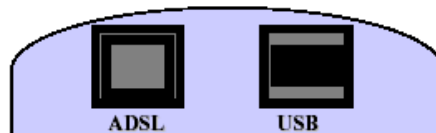
# I. Panel Description

## 1. Front Panel



<b>PWR</b>	Steady Yellow light indicates an active ADSL device.
<b>LINK</b>	Blinking Yellow light indicates ADSL connection session.
	Steady Yellow light indicates a valid ADSL connection.

## 2. Back Panel



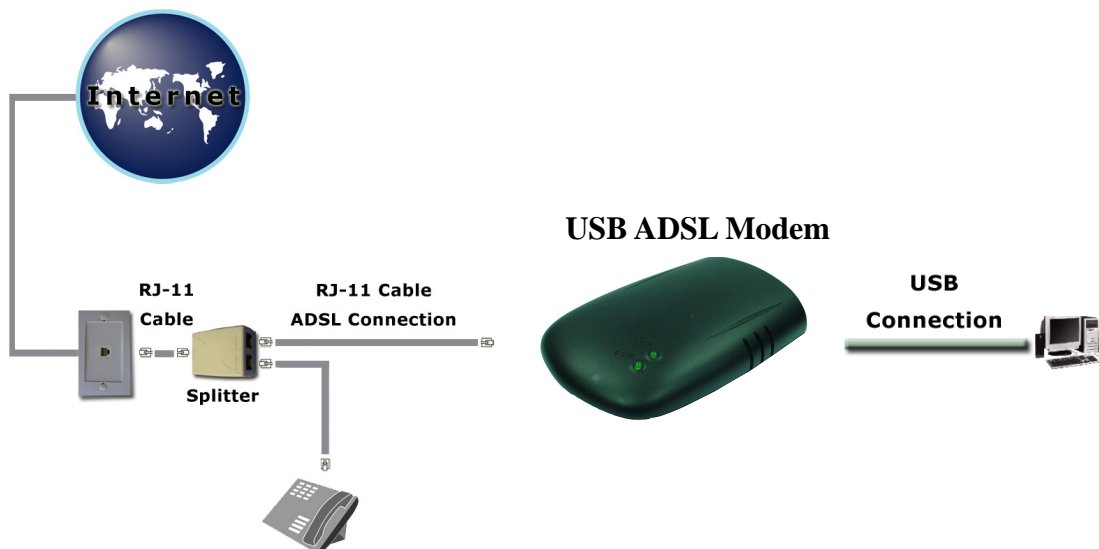
<b>ADSL</b>	Port for connecting the USB ADSL Modem to the ADSL Service Provider.
<b>USB</b>	USB Port for Host computer connection.

## II. Hardware Installation

This section describes the hardware connection mechanism of your USB ADSL Modem. You need to prepare the following items before you can establish an Internet connection through your USB ADSL Modem :

1. A computer system with the following items installed :
  - a. A Pentium II compatible processor and above PC or Notebook running with Windows operating systems.
  - b. A free USB port.
  - c. System with installed 64 MB RAM or more.
  - d. At least 50 MB of free disk space for driver installation.
  - e. An installed CD-ROM drive.
  
2. An ADSL service account and configuration information provided by your Internet Service Provider ( ISP ). You will need one or more of the following configuration parameters to connect your USB ADSL Modem to the Internet :
  - a. VPI/VCI parameters
  - b. Multiplexing Method
  - c. Host and Domain Names
  - d. ISP Login Name and Password
  - e. ISP Domain Name Server ( DNS ) Address
  - f. Fixed or Static IP Address.

3. Figure below shows the hardware connection mechanism :



### III. Driver Installation

This section describe the driver installation process. Follow the instructions step by step to complete the driver installation.

Step 1 : Power on your Computer.

Step 2 : Plug the ADSL line to the “**LINE**” Port of your ADSL Modem.

Step 3 : Insert the Square end of the USB cable into the “**USB**” port of the USB ADSL Modem.



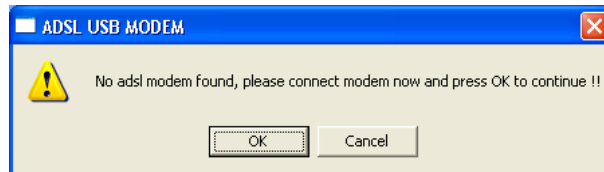
*It is strongly recommended that you use the Setup CD provided to install the USB ADSL Modem.*

*Insert the Setup CD into the CD-ROM drive before connecting your USB ADSL Modem to your computer. Follow the on-screen instructions to complete the installation.*

Step 4 : Insert the Setup CD-Title into your CD-ROM drive. The following Setup Wizard will pop-up. Click “**Driver Install**” and follow the on-screen instructions to complete the driver installation.



A warning message will pop-up as shown below once clicking the “Driver Install” icon.

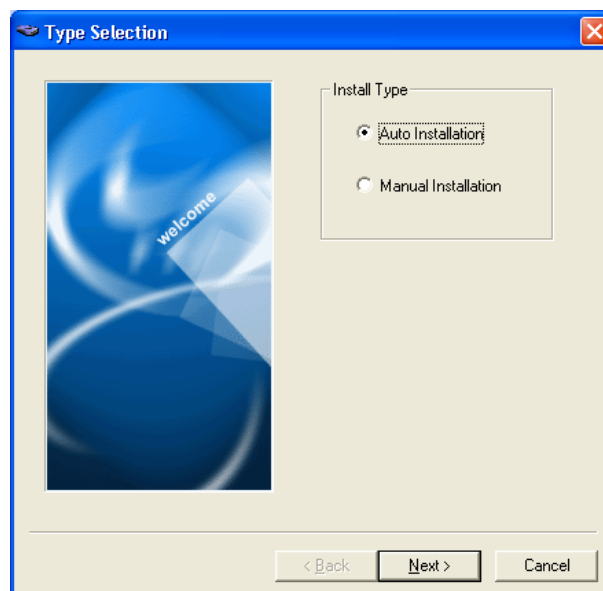


Connect your USB ADSL Modem into the USB port of your computer. The USB ADSL Modem will be detected and the installation process will continue automatically.



*The USB ADSL Modem should be connected to your PC prior to installing the software.  
No other Windows programs should be running on your PC during the driver  
installation process.*

Step 5 : A “Type Selection” window wizard will appear. Click “Auto Installation” or “Manual Installation” then click “Next” to continue.



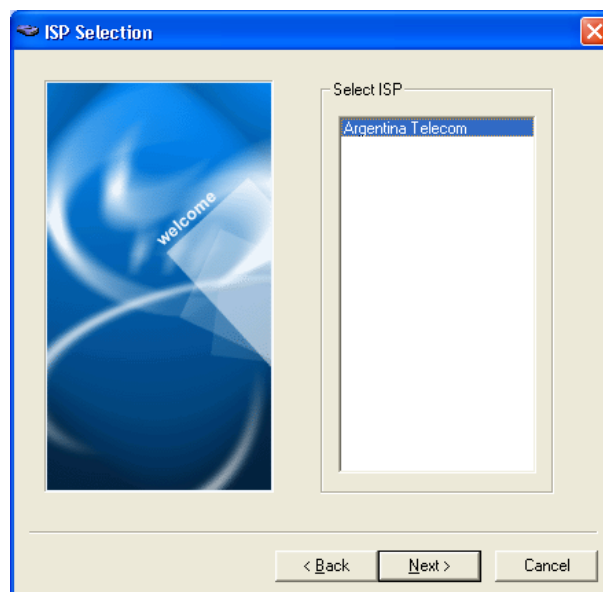
## 1. Auto Installation

Step 1 : Click **“Auto Installation”** then click **“Next”** to continue. Select Country from the list provided then click **“Next”** to continue.

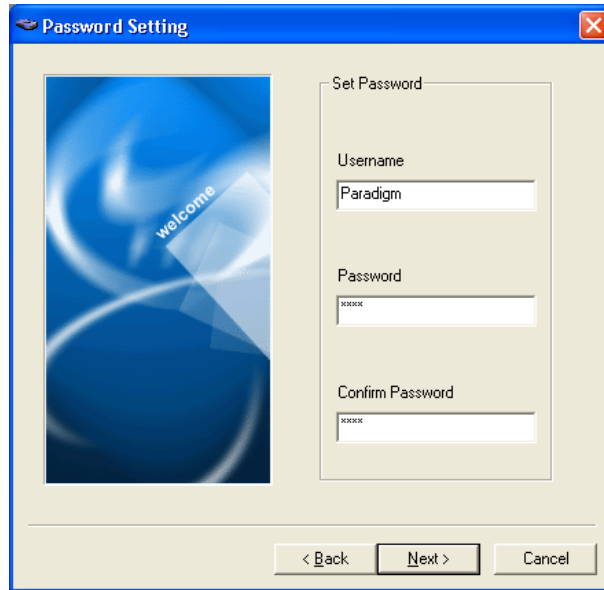


*Click **“Back”** and choose the **“Manual Installation”** to complete the Driver Installation process **“IF”** you can't find your location from the **“Country List”***

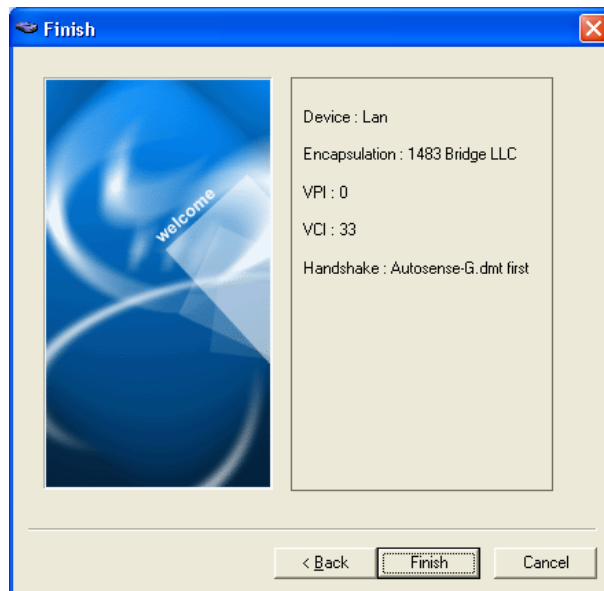
Step 2 : Select ISP from the list provided then click **“Next”**.



Step 3 : Some ISP will need you to enter your **“User Name”**, **“Password”** and **“Confirm Password”** before moving to the next step. Check your ISP for the setting details and click **“Next”** after your choice.



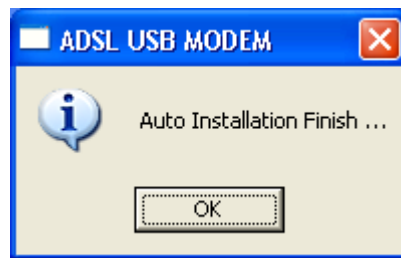
Step 4 : The Setup Wizard will ask you to review your settings before it starts to copy necessary files to your system. Click **“Finish”** if you are confirmed with your setting, or click **“Back”** to make any necessary changes.



Step 5 : When you click the **“Finish”** button, the installation process will automatically copying all the necessary files to your system. An **“Under Installation, please wait ...”** icon will appear indicates the files copying process.



Step 6 : Click **“OK”** to complete the Auto Installation process.

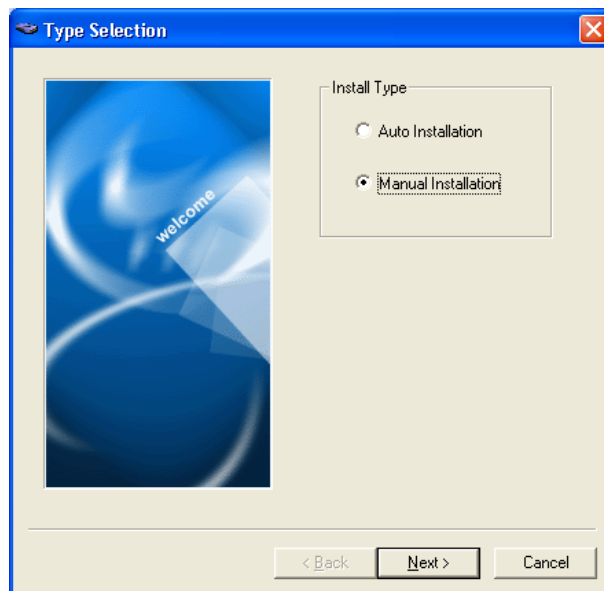


*If Windows asks you for the original Windows CD-ROM, insert the CD-ROM and direct Windows to the proper location for the CD-ROM.*

*Restart your Windows system to activate your setting might be necessary.  
Click **“OK”** to restart your Windows system.*

## 2. Manual Installation

Step 1 : Select “**Manual Installation**” and click “**Next**” to continue.



Step 2 : Select “**Encapsulation**”, “**Handshake**” and enter the “**VPI**” and “**VCI**” setting then click “**Next**” to continue. Check your ISP for the setting details.

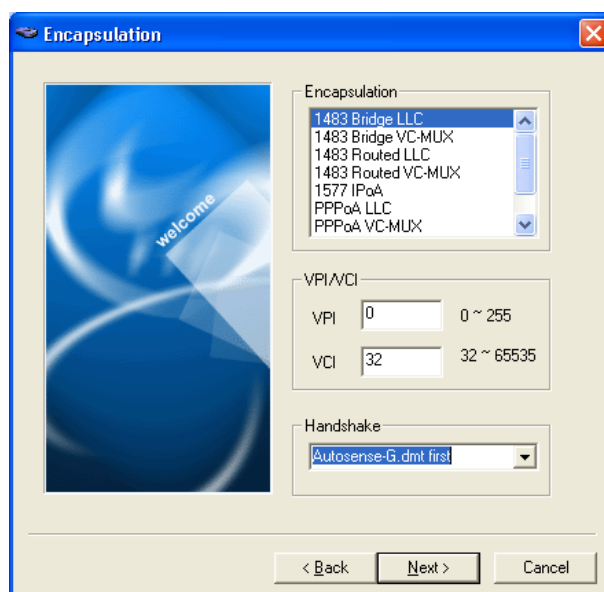


Table below lists the necessary setting need to be filled for each Encapsulation type. Check your ISP for the setting or configuration details.

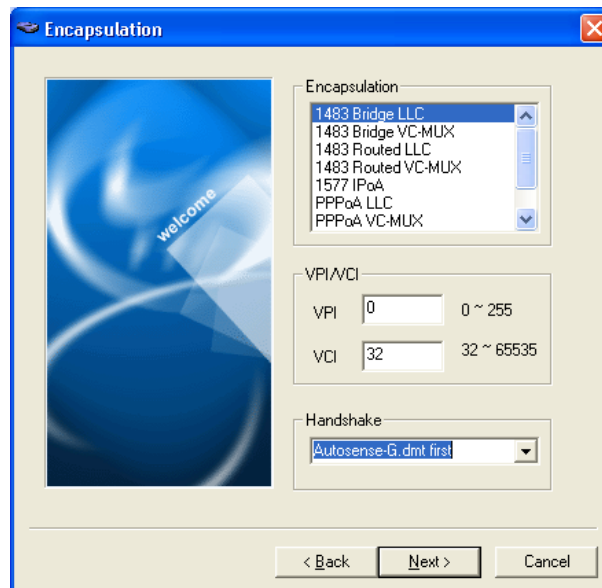
Encapsulation	VPI/VCI Setting	Password Setting	Handshake Setting
1483 Bridge LLC			
1483 Bridge VC-MUX			
1483 Routed LLC			
1483 Routed VC-MUX			
1577 IPoA			
PPPoA LLC			
PPPoA VC-MUX			
PPPoE LLC			
PPPoE VC-MUX			



*Check your ISP for the setting details before entering the “VPI/VCI” and “Handshake” setting.*

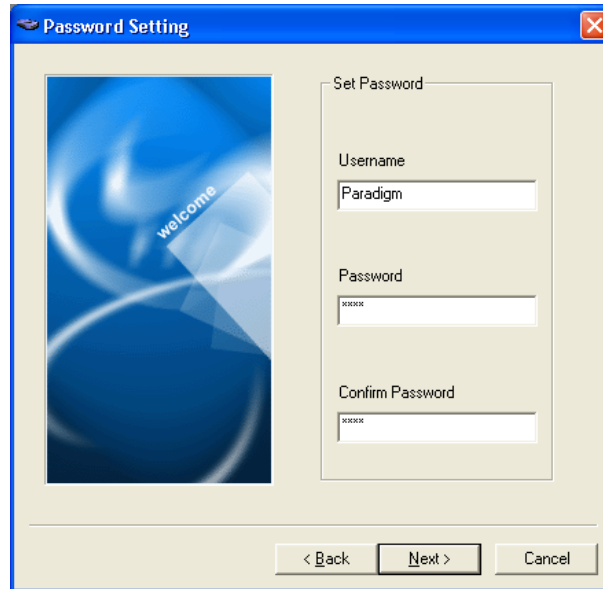
**1. 1483 Bridge LLC, 1483 Bridge VC-MUX, 1483 Routed LLC, 1483 Routed VC-MUX or 1577 IPoA:**

When “1483 Bridge LLC” or “1483 Bridge VC-MUX” or “1483 Routed LLC” or “1483 Routed VC-MUX” or “1577 IPoA” Encapsulation is selected, manually enter the “VPI” and “VCI” setting in the field provided and select the “Handshake” procedure then click “Next” to continue.



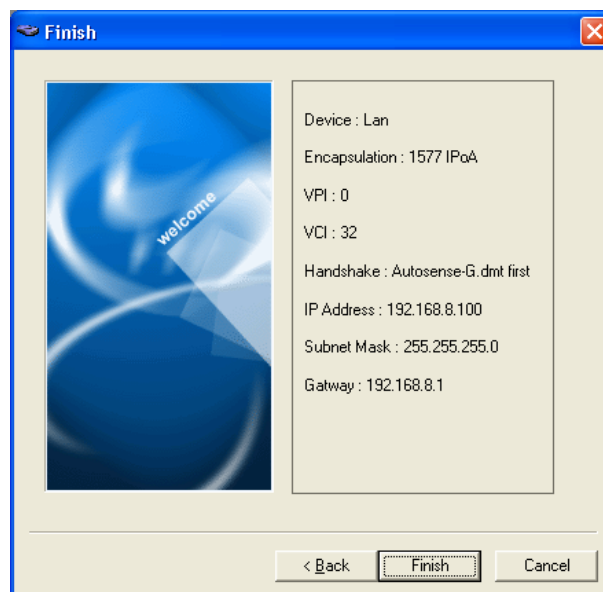
## 2. PPPoA LLC, PPPoA VC-MUX, PPPoE LLC or PPPoE VC-MUX :

When “PPPoA LLC” or “PPPoA VC-MUX” or “PPPoE LLC” or “PPPoE VC-MUX” Encapsulation is selected, manually enter your “User Name”, “Password” and “Confirm Password” in the field provided then click “Next” to continue.



*Check your ISP for the setting details before entering your “Username” and “Password”.*

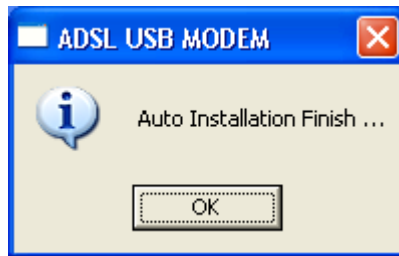
Step 3 : The Setup Wizard will ask you to review your settings before it starts to copy necessary files to your system. Click “**Finish**” if you are satisfied with your setting, or click “**Back**” to change any necessary settings.



Step 4 : When you click the **“Finish”** button, the installation process will automatically copying all the necessary files to your system. An **“Under Installation, please wait ...”** icon will appear indicates the files copying process.



Step 5 : Click **“OK”** to complete the Auto Installation process.



*If Windows asks you for the original Windows CD-ROM, insert the CD-ROM and direct Windows to the proper location for the CD-ROM.*

*Restart your Windows system to activate your setting might be necessary.*

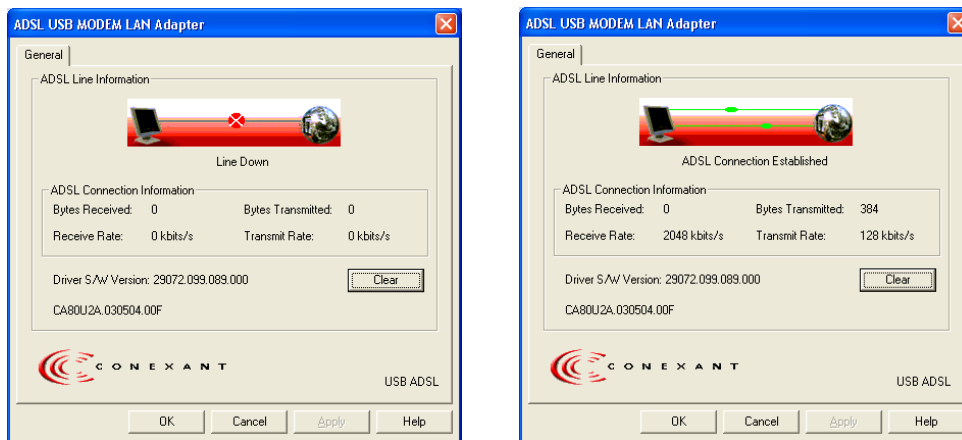
*Click “OK” to restart your Windows system.*

## IV. Driver Utility

After the successful installation of the ADSL USB Modem driver, an “**ADSL USB Modem Control Panel**” icon will appear on the Windows screen.



Double click the icon, an ADSL Line Information window will pop up and shows all the ADSL connection status information.



To uninstall the ADSL USB Modem’s driver from your system, click “**Start**” → “**Programs**” → “**ADSL USB Modem**” → “**Uninstall ADSL USB Modem**”. The uninstall wizard will guide you and remove all the necessary files from your system.



***Restart your Windows system to activate your choice might be necessary.***

***Click “OK” to restart your Windows system.***