



DYNAMIX UM-A

4/1 Port ADSL Router

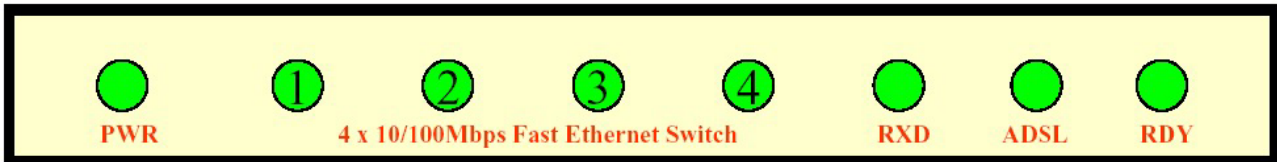
QUICK START GUIDE

Contents

I. PANEL DESCRIPTION----- 4 PORT ADSL ROUTER	2
II. PANEL DESCRIPTION----- 1 PORT ADSL ROUTER.....	3
III. CONNECTING YOUR ADSL ROUTER----- 4 PORT	4
IV. CONNECTING YOUR ADSL ROUTER----- 1 PORT	5
V. SET UP TCP/IP IN WINDOWS	6
OPTION-A WINDOWS ME / 98	6
OPTION-B WINDOWS 2000	7
OPTION-C WINDOWS XP.....	8
VI. SET UP ADSL ROUTER	9

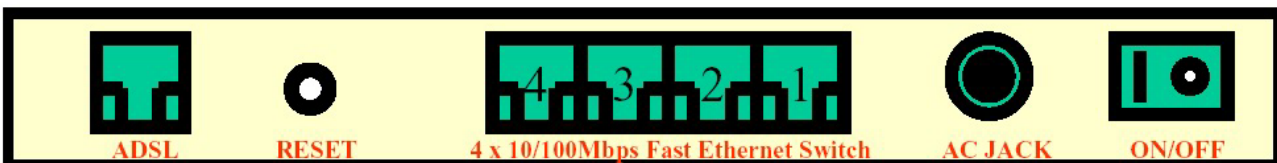
I. Panel Description----- 4 Port ADSL Router

1. Front Panel



PWR	Steady Green light indicates the 4 Port ADSL Router is powered on.
Port 1	Port 1. Blinking when the 4 Port ADSL Router is actively sending/receiving data.
Port 2	Port 2. Blinking when the 4 Port ADSL Router is actively sending/receiving data.
Port 3	Port 3. Blinking when the 4 Port ADSL Router is actively sending/receiving data.
Port 4	Port 4. Blinking when the 4 Port ADSL Router is actively sending/receiving data.
RXD	Blinking when data communication is active.
ADSL	Lit when a successful ADSL connection is established.
RDY	System status indicator. Blinking indicate system is alive.

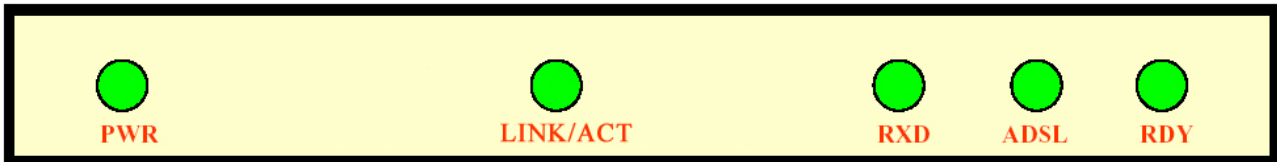
2. Back Panel



ADSL	Connect to ADSL Line.
RESET	Restore the 4 Port ADSL Router's factory default setting.
PORT 1	Connect to network device 1. Support auto crossover functionality.
PORT 2	Connect to network device 2. Support auto crossover functionality.
PORT 3	Connect to network device 3. Support auto crossover functionality.
PORT 4	Connect to network device 4. Support auto crossover functionality.
AC JACK	Connect to AC Power Adaptor.
ON/OFF	Power ON/OFF Switch.

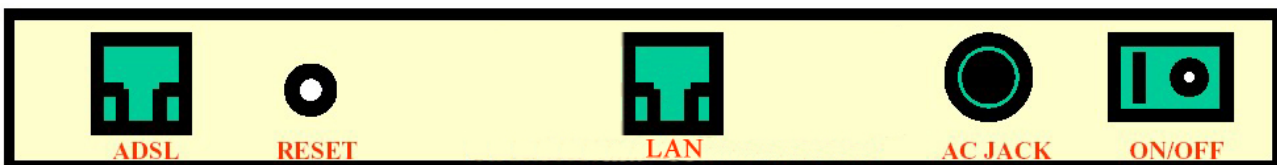
II. Panel Description----- 1 Port ADSL Router

1. Front Panel



PWR	Steady Green light indicates the 4 Port ADSL Router is powered on.
LINK/ACT	Blinking when the 1 Port ADSL Router is actively sending/receiving data.
RxD	Blinking when data communication is active.
ADSL	Lit when a successful ADSL connection is established.
RDY	System status indicator. Blinking indicate system is alive.

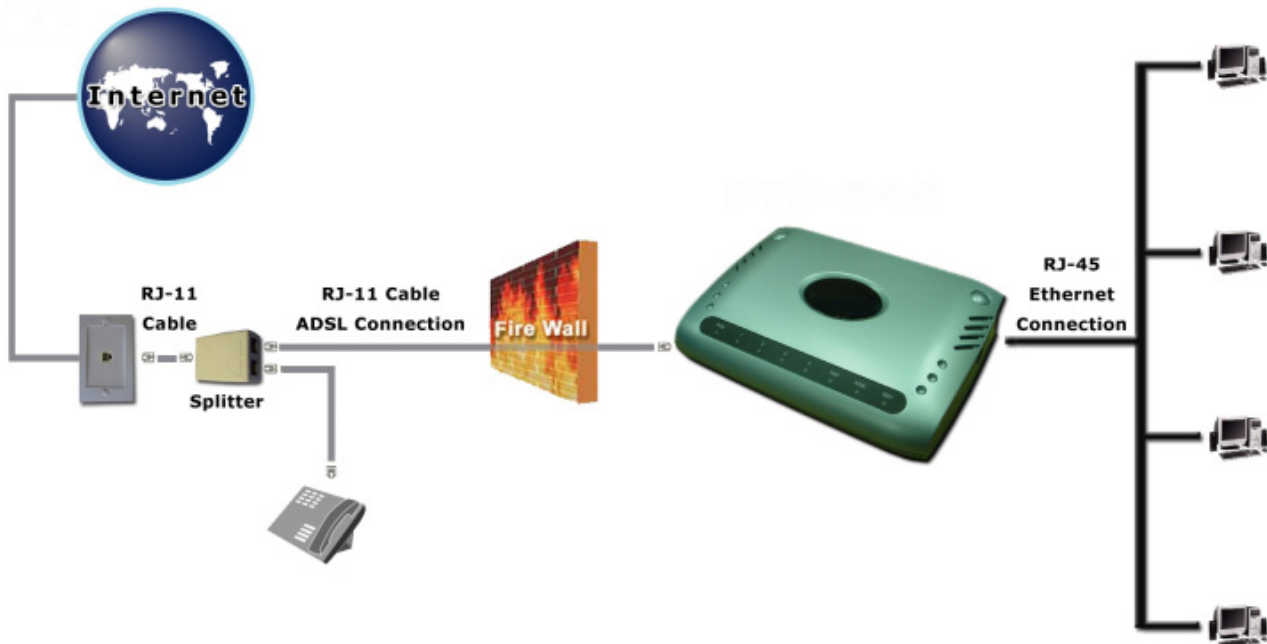
2. Back Panel



ADSL	Connect to ADSL Line.
RESET	Restore the 4 Port ADSL Router's factory default setting.
LAN	Connect to network device. Support auto crossover functionality.
AC JACK	Connect to AC Power Adaptor.
ON/OFF	Power ON/OFF Switch.

III. Connecting Your ADSL Router----- 4 Port

1. Wired connection mechanism :

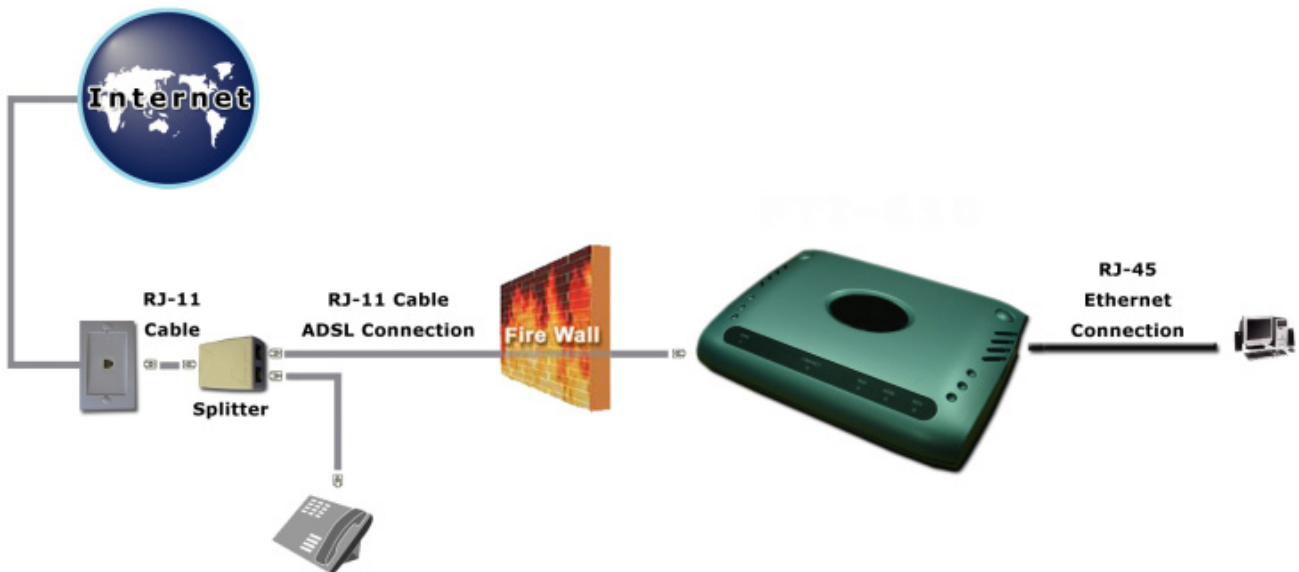


2. Wired Connection:

- A. Make sure all your network hardware and PCs are powered off.
- B. Connect one end of your Ethernet network cable (RJ45) to one of the LAN ports (Labeled 1~4) on the 4 Port ADSL Router, and plug in the other end to an Ethernet port on your PC.
- C. Connect your ADSL Line from the Splitter or Microfilter to the ADSL port of the 4 Port ADSL Router.
- D. Connect the AC Power Adaptor to the 4 Port ADSL Router and the other end of the adaptor to the wall.
- E. Power on your Notebook / PCs and the 4 Port ADSL Router.

IV. Connecting Your ADSL Router----- 1 Port

1. Wired connection mechanism :

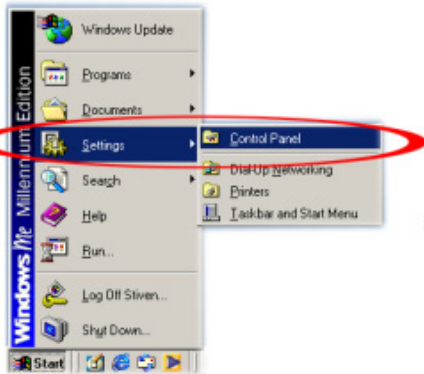


2. Wired Connection :

- A. Make sure all your network hardware and PCs are powered off.
- B. Connect one end of your Ethernet network cable (RJ45) to one of the LAN ports on the 1 Port ADSL Router, and plug in the other end to an Ethernet port on your PC.
- C. Connect your ADSL Line from the Splitter or Microfilter to the ADSL port of the 1 Port ADSL Router.
- D. Connect the AC Power Adaptor to the 1 Port ADSL Router and the other end of the adaptor to the wall.
- E. Power on your Notebook/PCs and the 1 Port ADSL Router.

V. Set Up TCP/IP In Windows

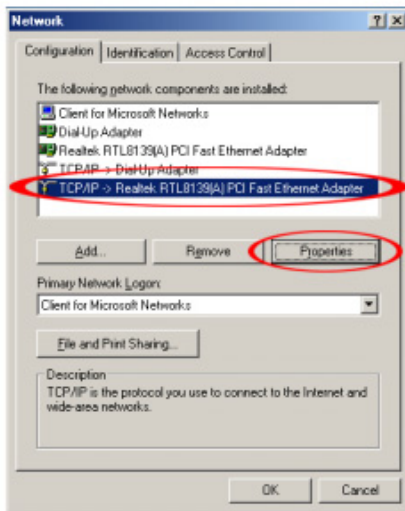
Option-A Windows ME / 98



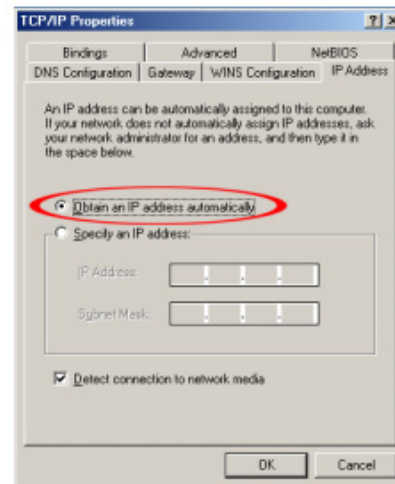
Step 1: Click Start → Setting → Control Panel.



Step 2: Double-click the Network icon.



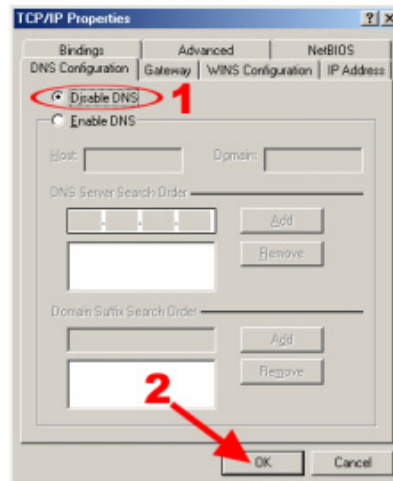
Step 3: Select the network adapter installed and click on Properties.



Step 4: Select Obtain an IP address automatically.

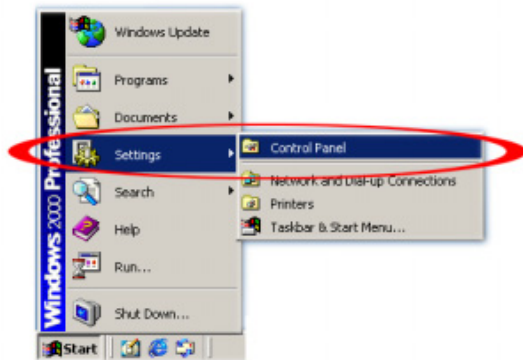


Step 5: Erase all the gateway setting.



Step 6: Select Disable DNS then click OK.

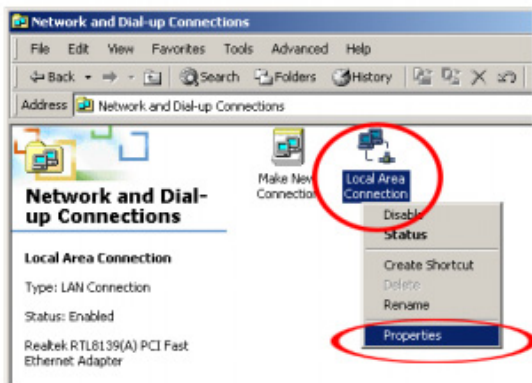
Option-B Windows 2000



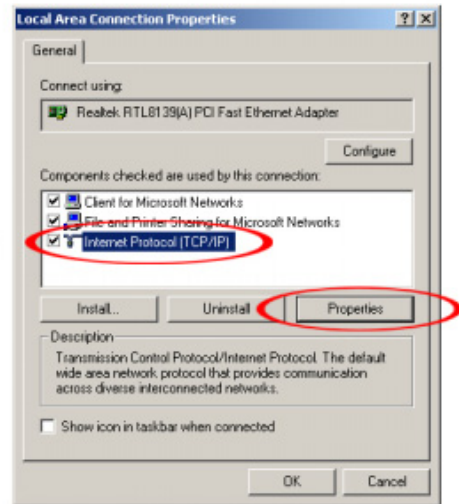
Step 1: Click Start → Setting → Control Panel.



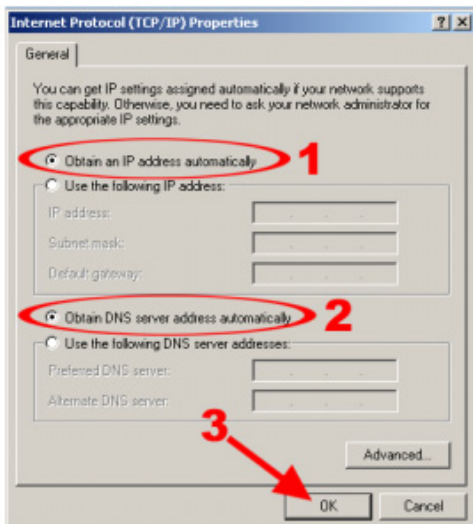
Step 2: Double-click the Network and Dial-up Connections icon.



Step 3: Right Click on the Local Area Connection and select Properties.

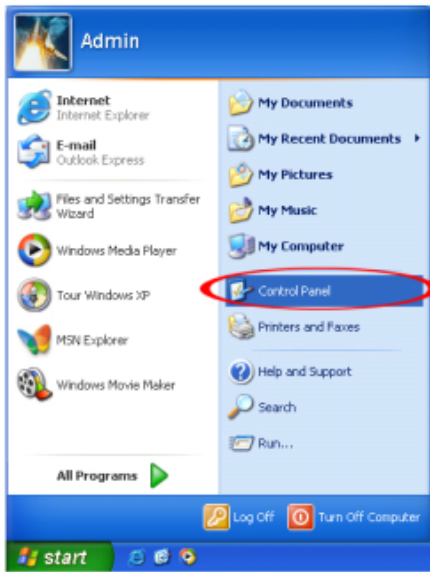


Step 4: Select Internet Protocol (TCP/IP) and click Properties.

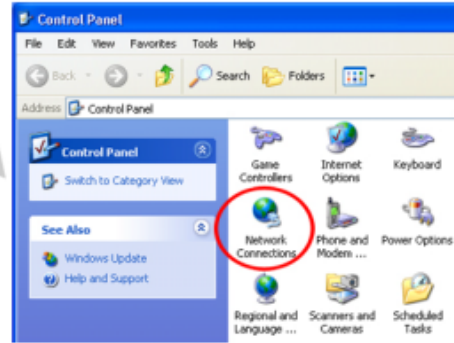


Step 5: Select Obtain and IP address automatically and NObtain DNS server address automatically. Then Click on OK.

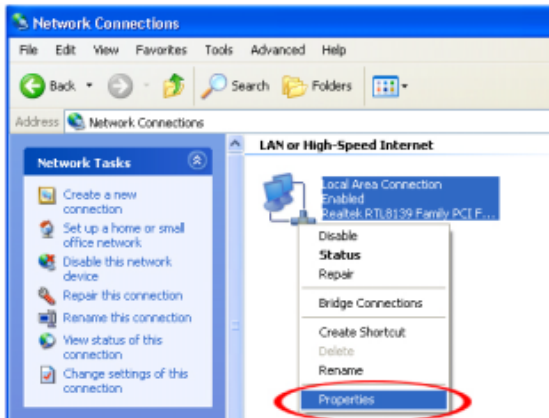
Option-C Windows XP



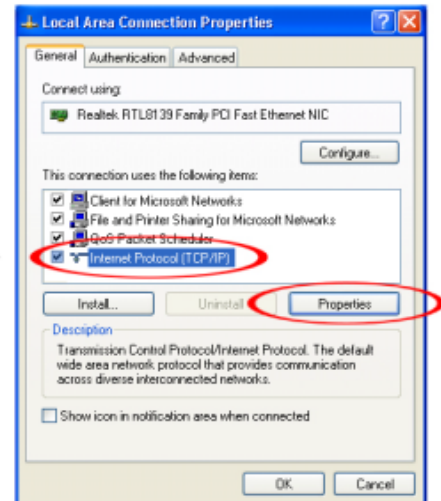
Step 1: Click Start → Control Panel.



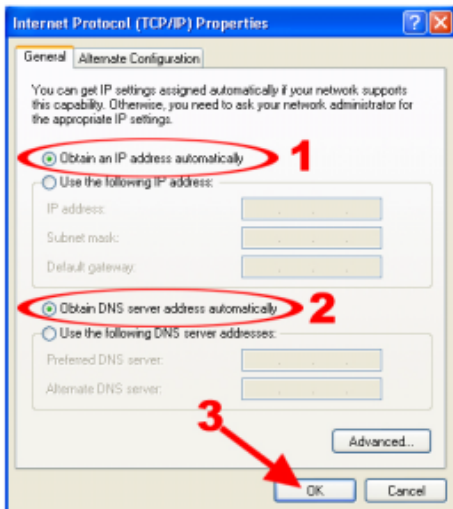
Step 2: Double-click the Network Connections icon.



Step 3: Right Click on the Local Area Connection and select Properties.



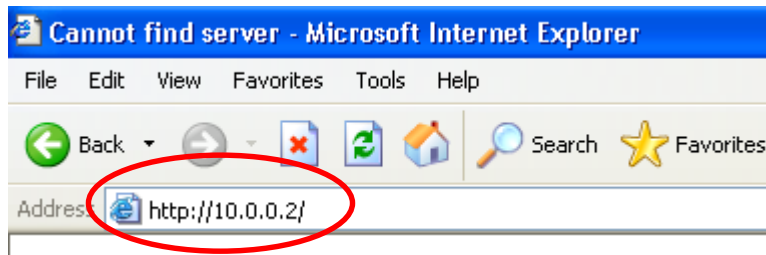
Step 4: Select Internet Protocol (TCP/IP) and click Properties.



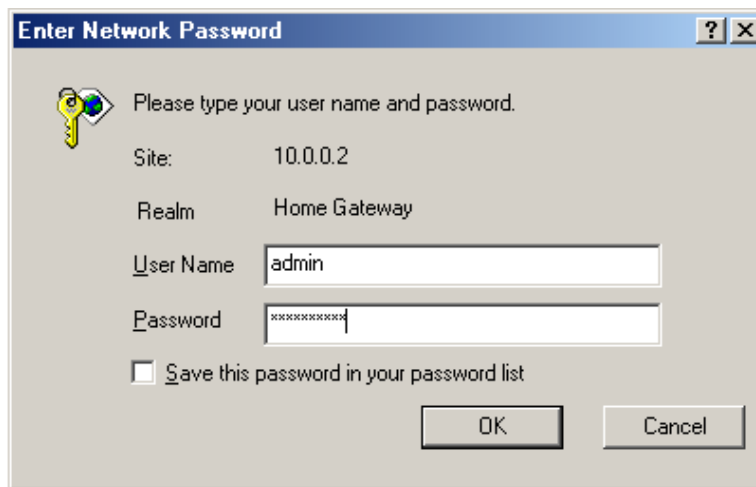
Step 5: Select Obtain and IP address automatically and NObtain DNS server address automatically. Then Click on OK.

VI. Set Up ADSL Router

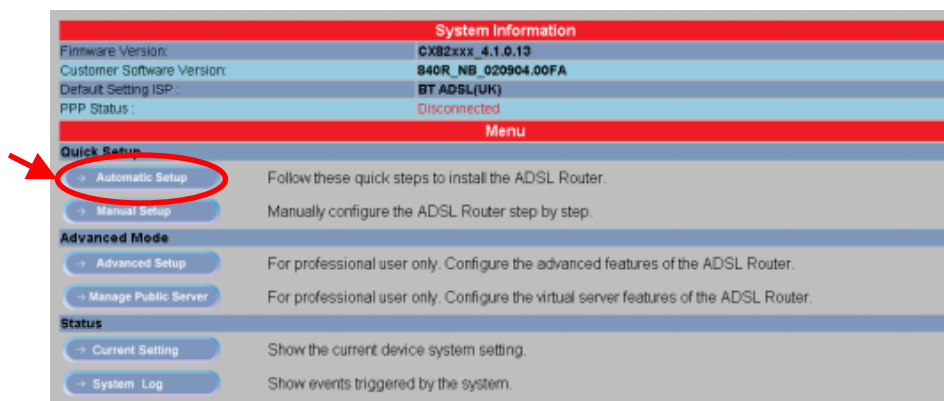
1. Launch your web browser, and enter the ADSL Router's IP Address : **"10.0.0.2"** in the address field then press the Enter key to login.



2. Enter the default User Name **"admin"** and Password **"epicrouter"**. Then press **"OK"** to login.



3. Click **"Automatic Setup"** and follow the following steps to help you install the ADSL Router quickly and easily.



STEP 1.

Select the presetting country form the list.

The screenshot displays a configuration interface for a 4/1 Port ADSL Router. It is divided into two main sections: 'Automatic Setting' and 'Choose mode'.
Automatic Setting: This section contains five rows of configuration options:

- Country: A dropdown menu with 'Finland' selected.
- ISP: A dropdown menu with 'Helsinki' selected.
- Encapsulation: A text input field containing '1483 Bridged LLC'.
- VPI: A text input field containing '0'.
- VCI: A text input field containing '100'.

Choose mode: This section contains two rows of configuration options:

- Bridge mode: A dropdown menu with 'Enabled' selected.
- IP mode: A dropdown menu with 'Dynamic IP' selected.

At the bottom of the 'Choose mode' section, there is a blue button labeled 'Save Setting'.

- ◆ IP Mode : Click “**Dynamic IP**” or “**Static IP**” for the connection mode. Check your ISP for the connection/setting details.
- ◆ If “**Static IP**” mode is chosen, more terms need to be filled before any Internet access is available. Check your ISP for the setting/configuration details.
- ◆ For some specific Encapsulation, you might need to fill in your “**User Name**” and “**Password**”. Check your ISP for the setting/configuration details.
- ◆ Click and select “**Manual Setup**” if you can’t find any available parameters from the country list. Check your ISP immediately for the setting/configuration details.

STEP 2.

Click “**Save Setting**” after your choice.

Your settings are being saved and the router being rebooted. Please wait...

Your settings have been saved and the router has rebooted.

[Back To Home](#)

The ADSL Router system will reboot and activate your setting. Click “**Back To Home**” after the reboot process. Connection to the Internet is available after the above process.