



DYNAMIX UM-A ADSL Router



QUICK START GUIDE

Contents

I. PANEL DESCRIPTION----- 1 PORT ADSL ROUTER

II. CONNECTING YOUR ADSL ROUTER----- 1 PORT

III. SET UP TCP/IP IN WINDOWS

 OPTION-A WINDOWS ME / 98

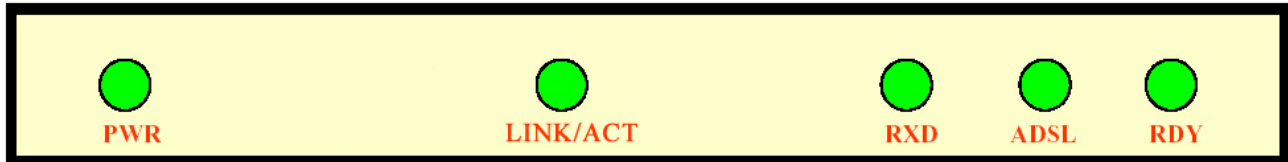
 OPTION-B WINDOWS 2000

 OPTION-C WINDOWS XP

IV. SET UP ADSL ROUTER

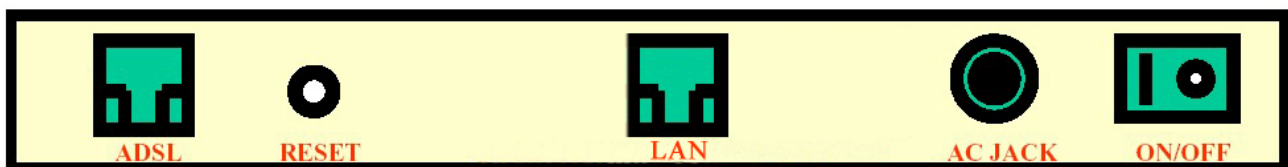
II. Panel Description - Dynamix UM-A ADSL Router

1. Front Panel



PWR	Steady Green light indicates the Dynamix UM-A ADSL Router is powered on.
LINK/ACT	Blinking when Dynamix UM-A ADSL Router is actively sending/receiving data.
RxD	Blinking when data communication is active.
ADSL	Lit when a successful ADSL connection is established.
RDY	System status indicator. Blinking indicate system is alive.

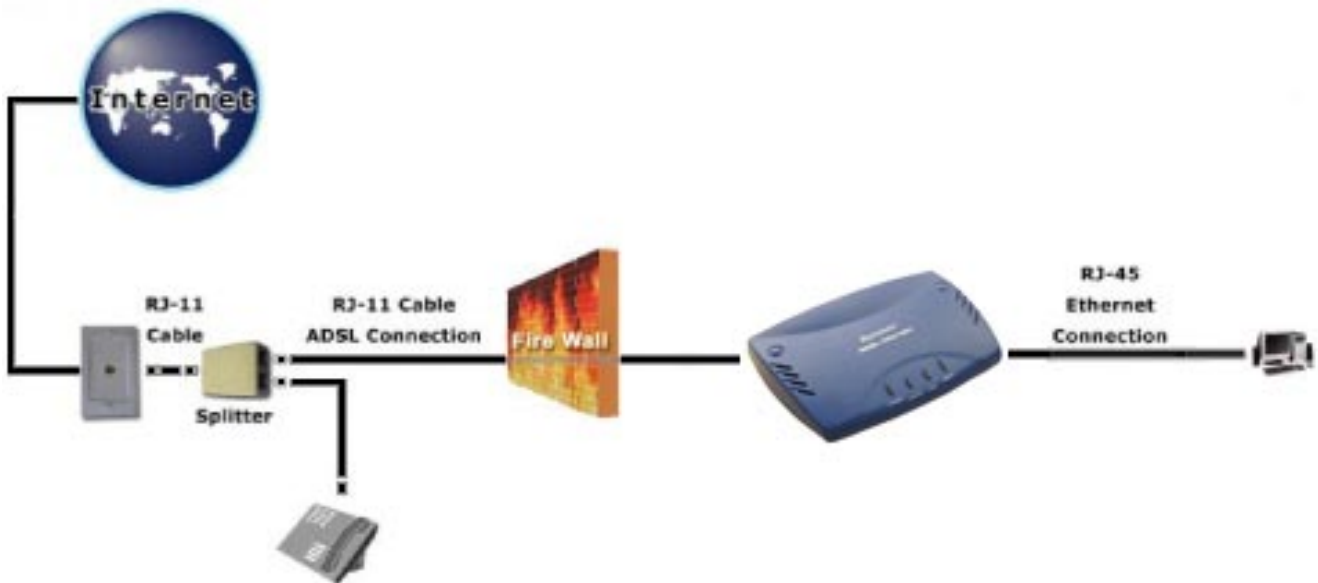
2. Back Panel



ADSL	Connect to ADSL Line.
RESET	Restore the Dynamix UM-A ADSL Router's factory default setting.
LAN	Connect to network device. Support auto crossover functionality.
AC JACK	Connect to AC Power Adaptor.
ON/OFF	Power ON/OFF Switch.

IV. Connecting your Dynamix UM-A ADSL Router-

1. Wired connection mechanism :

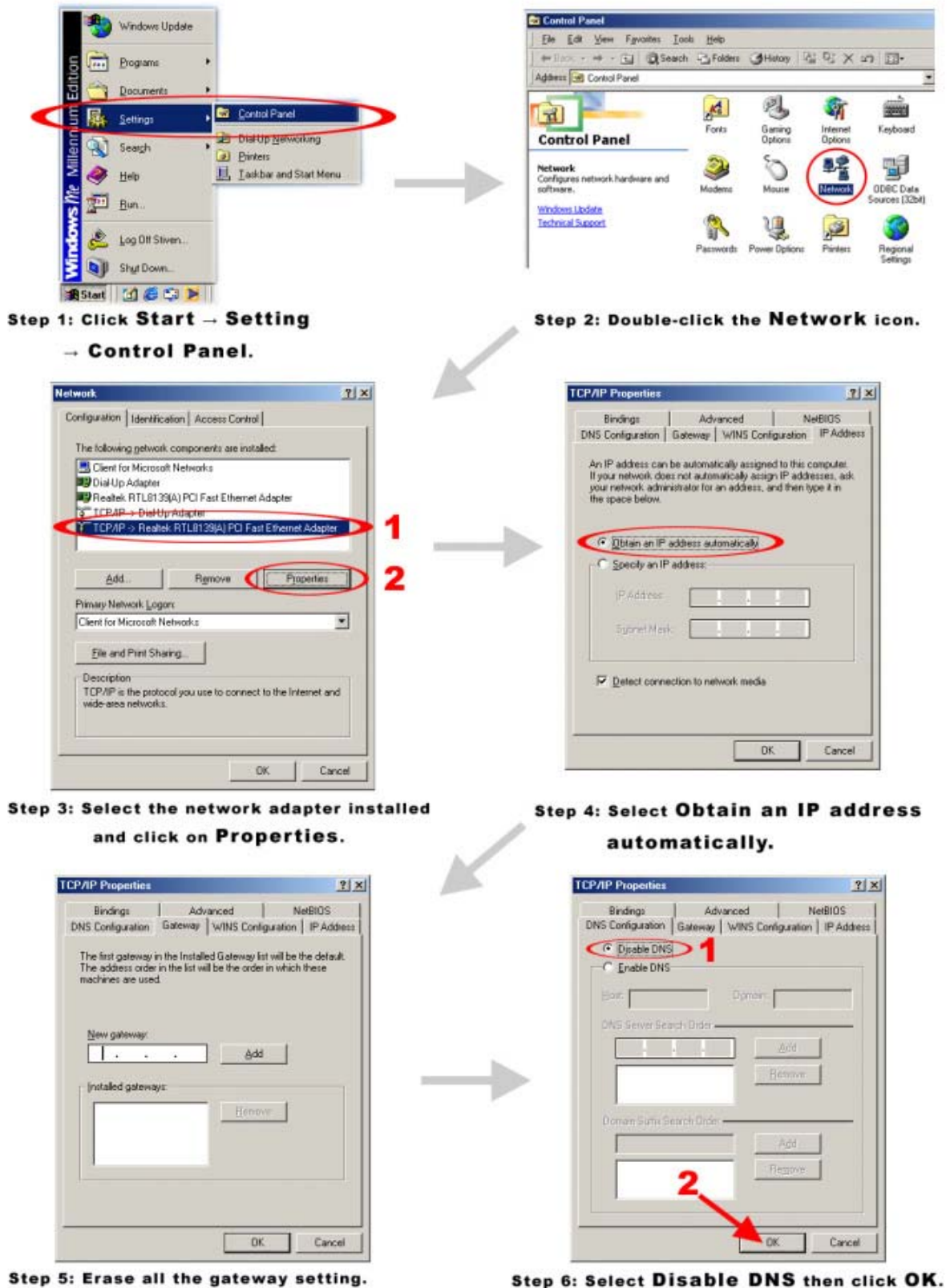


2. Wired Connection :

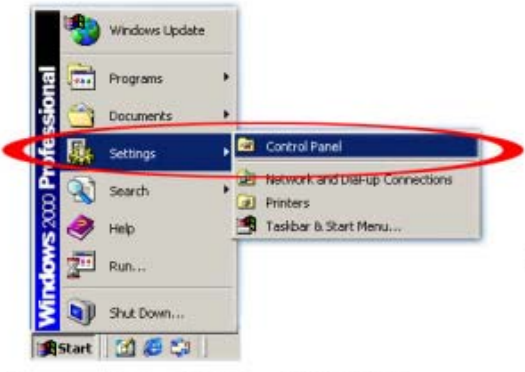
- A. Make sure all your network hardware and PCs are powered off.
- B. Connect one end of your Ethernet network cable (RJ45) to one of the LAN ports on the 1 Port ADSL Router, and plug in the other end to an Ethernet port on your PC.
- C. Connect your ADSL Line from the Splitter or Microfilter to the ADSL port of the Dynamix UM-A ADSL Router.
- D. Connect the AC Power Adaptor to the Dynamix UM-A ADSL Router and the other end of the adaptor to the wall.
- E. Power on your Notebook/PCs and the Dynamix UM-A ADSL Router.

V. Set Up TCP/IP In Windows

Option-A Windows ME / 98



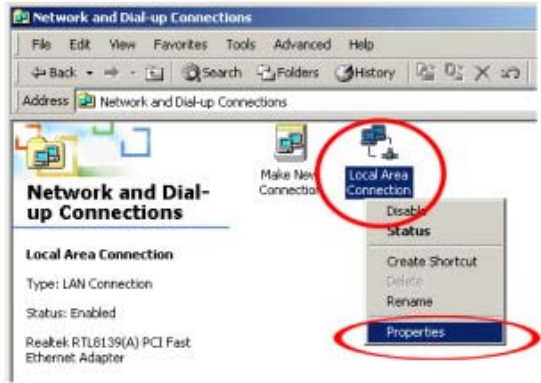
Option-B Windows 2000



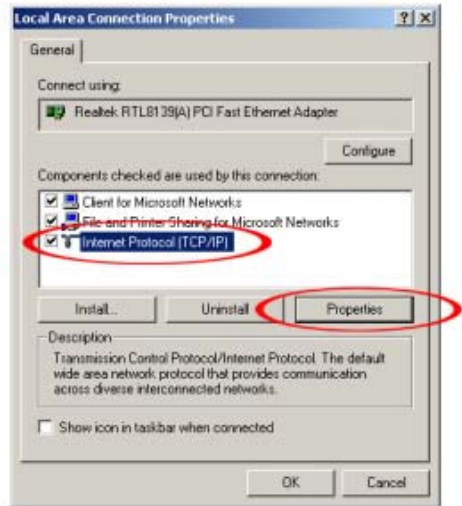
Step 1: Click Start → Setting → Control Panel.



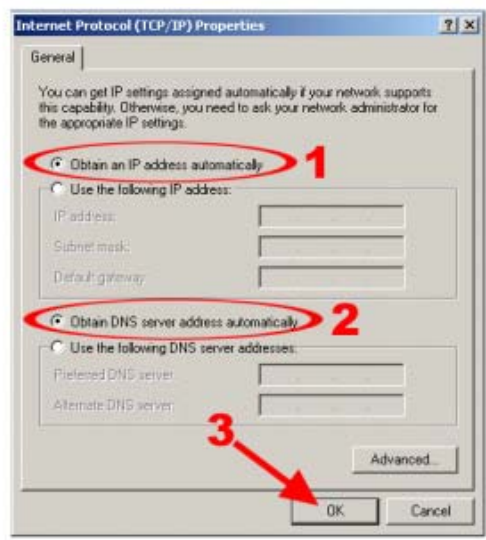
Step 2: Double-click the Network and Dial-up Connections icon.



Step 3: Right Click on the Local Area Connection and select Properties.



Step 4: Select Internet Protocol (TCP/IP) and click Properties.

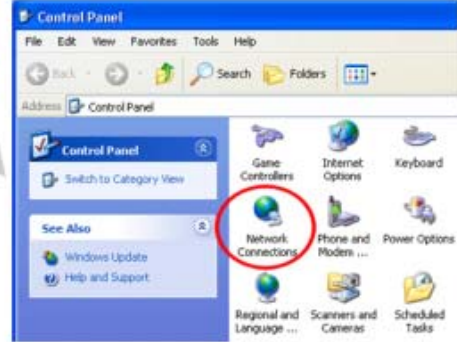


Step 5: Select Obtain and IP address automatically and NObtain DNS server address automatically. Then Click on OK.

Option-C Windows XP



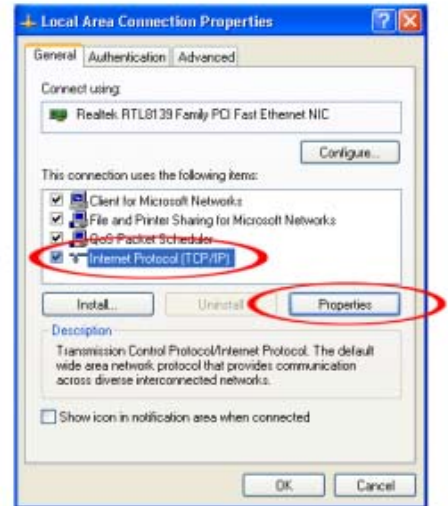
Step 1: Click Start → Control Panel.



Step 2: Double-click the Network Connections icon.



Step 3: Right Click on the Local Area Connection and select Properties.



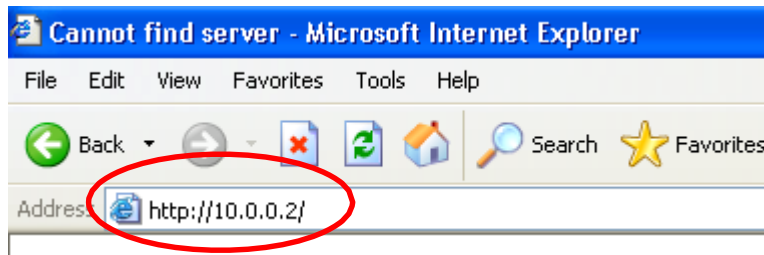
Step 4: Select Internet Protocol (TCP/IP) and click Properties.



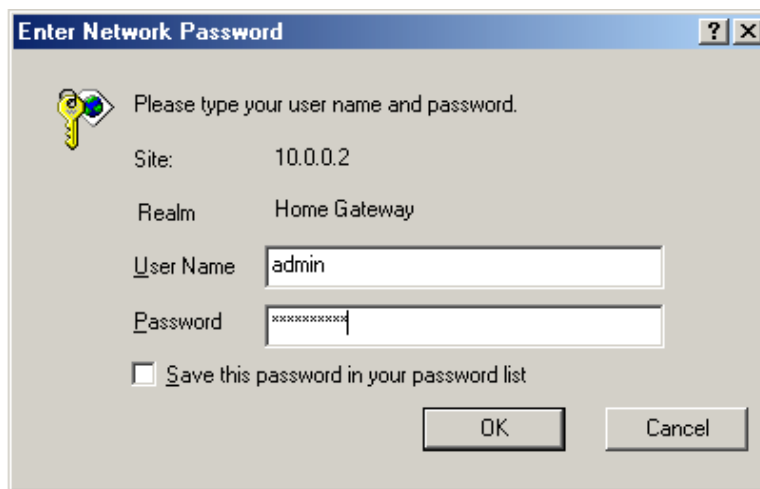
Step 5: Select Obtain and IP address automatically and NObtain DNS server address automatically. Then Click on OK.

VI. Set Up ADSL Router

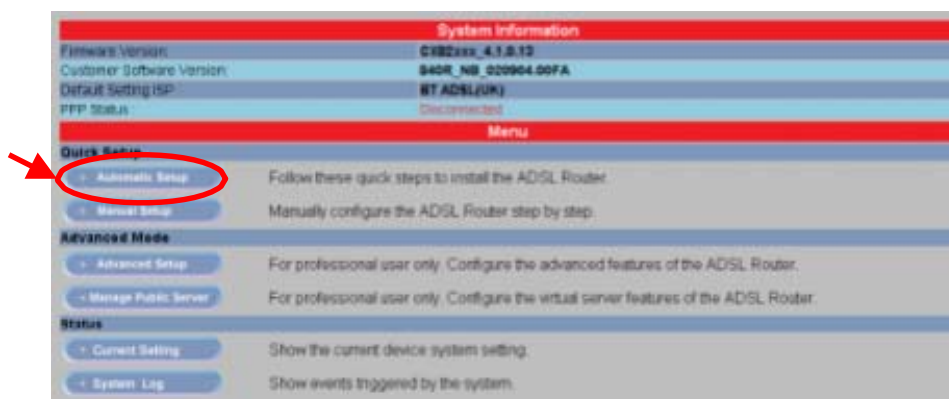
1. Launch your web browser, and enter the ADSL Router's IP Address : **"10.0.0.2"** in the address field then press the Enter key to login.



2. Enter the default User Name **"admin"** and Password **"epicrouter"**. Then press **"OK"** to login.



3. Click **"Automatic Setup"** and follow the following steps to help you install the ADSL Router quickly and easily.



STEP 1.

Select the presetting country form the list.

Automatic Setting	
Country :	Finland
ISP :	Helsinki
Encapsulation :	1483 Bridged LLC
VPI :	0
VCI :	100

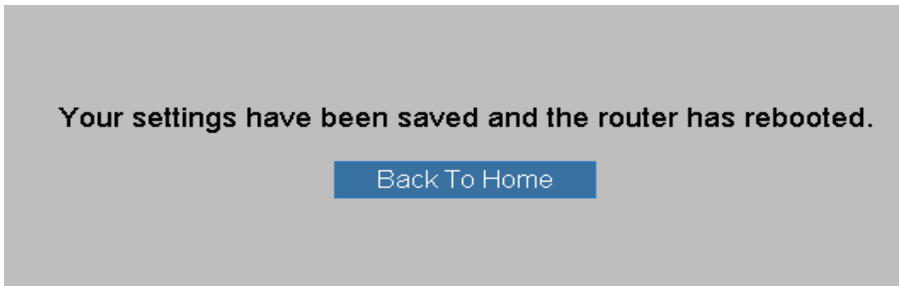
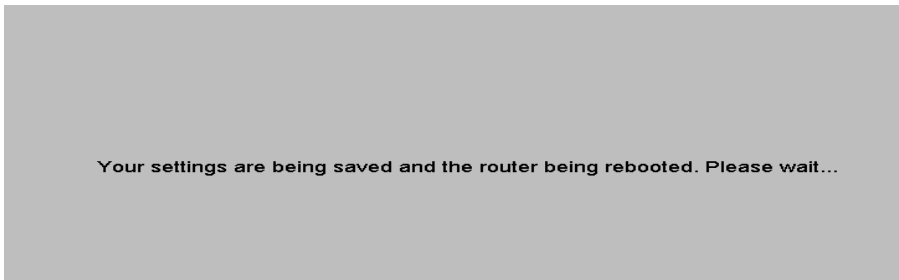
Choose mode	
Bridge mode	Enabled
IP mode	Dynamic IP

Save Setting

- 👁 IP Mode : Click “**Dynamic IP**” or “**Static IP**” for the connection mode. Check your ISP for the connection/setting details.
- 👁 If “**Static IP**” mode is chosen, more terms need to be filled before any Internet access is available. Check your ISP for the setting/configuration details.
- 👁 For some specific Encapsulation, you might need to fill in your “**User Name**” and “**Password**”. Check your ISP for the setting/configuration details.
- 👁 Click and select “**Manual Setup**” if you can’t find any available parameters from the country list. Check your ISP immediately for the setting/configuration details.

STEP 2.

Click “**Save Setting**” after your choice.



Dynamix UM-A ADSL Router system will reboot and activate your setting. Click “**Back To Home**” after the reboot process. Connection to the Internet is available after the above process.